

Евгений
КАЗАНОВСКИЙ

Начальные
годы
обучения



Дюжина джазовых крохотулечек

Издательство «Союз художников» Санкт-Петербург

Быстро $\text{♩} = 90$

p

mp

Быстро $\text{♩} = 62$

f

Умеренно $\text{♩} = 100$



Handwritten musical notation for the first system, marked *tr*. It consists of a treble and bass staff with a key signature of one sharp (F#) and a common time signature (C). The melody in the treble staff features eighth and sixteenth notes, while the bass staff provides a steady accompaniment of eighth notes.

Handwritten musical notation for the second system, continuing the piece. It maintains the same key signature and time signature, with the treble staff showing more complex melodic lines and the bass staff continuing the accompaniment.

Handwritten musical notation for the third system, concluding the first section. The notation includes various musical symbols such as slurs, ties, and accidentals.

Быстро $\text{♩} = 82$



Handwritten musical notation for the fourth system, marked *f*. It features a treble and bass staff with a key signature of one flat (Bb) and a common time signature (C). The tempo is marked 'Быстро' (Allegro) with a quarter note equal to 82 beats per minute.

Handwritten musical notation for the fifth system, continuing the fast-paced piece. The treble staff shows a series of eighth notes, and the bass staff has a simple accompaniment.

Handwritten musical notation for the sixth system, concluding the second section. The notation includes various musical symbols such as slurs, ties, and accidentals.

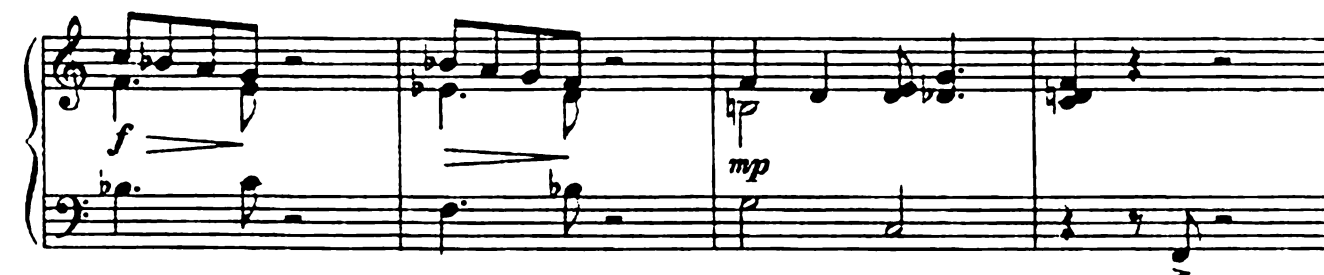
Быстро $\text{♩} = 90$



Умеренно $\text{♩} = 110$



Быстро $\text{♩} = 68$



Быстро $\text{♩}=140$



Умеренно $\text{♩}=80$



Умеренно $\text{♩} = 120$

p

Конец

Играть с начала до слова «Конец»

Подвижно ♩=140



First system of the first exercise. Treble clef, key of D major (two sharps), 2/4 time. The melody starts with a forte (*f*) dynamic. The bass line provides a simple harmonic accompaniment.

Second system of the first exercise. The melody continues with a piano (*p*) dynamic in the first half and returns to forte (*f*) in the second half. The bass line continues with a steady accompaniment.

Third system of the first exercise. The melody continues with a piano (*p*) dynamic. The bass line features a more active accompaniment with eighth notes.

Fourth system of the first exercise. The melody concludes with a final cadence. The bass line continues with a steady accompaniment.

Подвижно ♩=148



First system of the second exercise. Treble clef, key of D major (two sharps), 2/4 time. The melody starts with a forte (*f*) dynamic. The bass line provides a simple harmonic accompaniment.

Second system of the second exercise. The melody continues with a piano (*p*) dynamic. The bass line continues with a steady accompaniment.

Third system of the second exercise. The melody concludes with a final cadence. The bass line continues with a steady accompaniment.